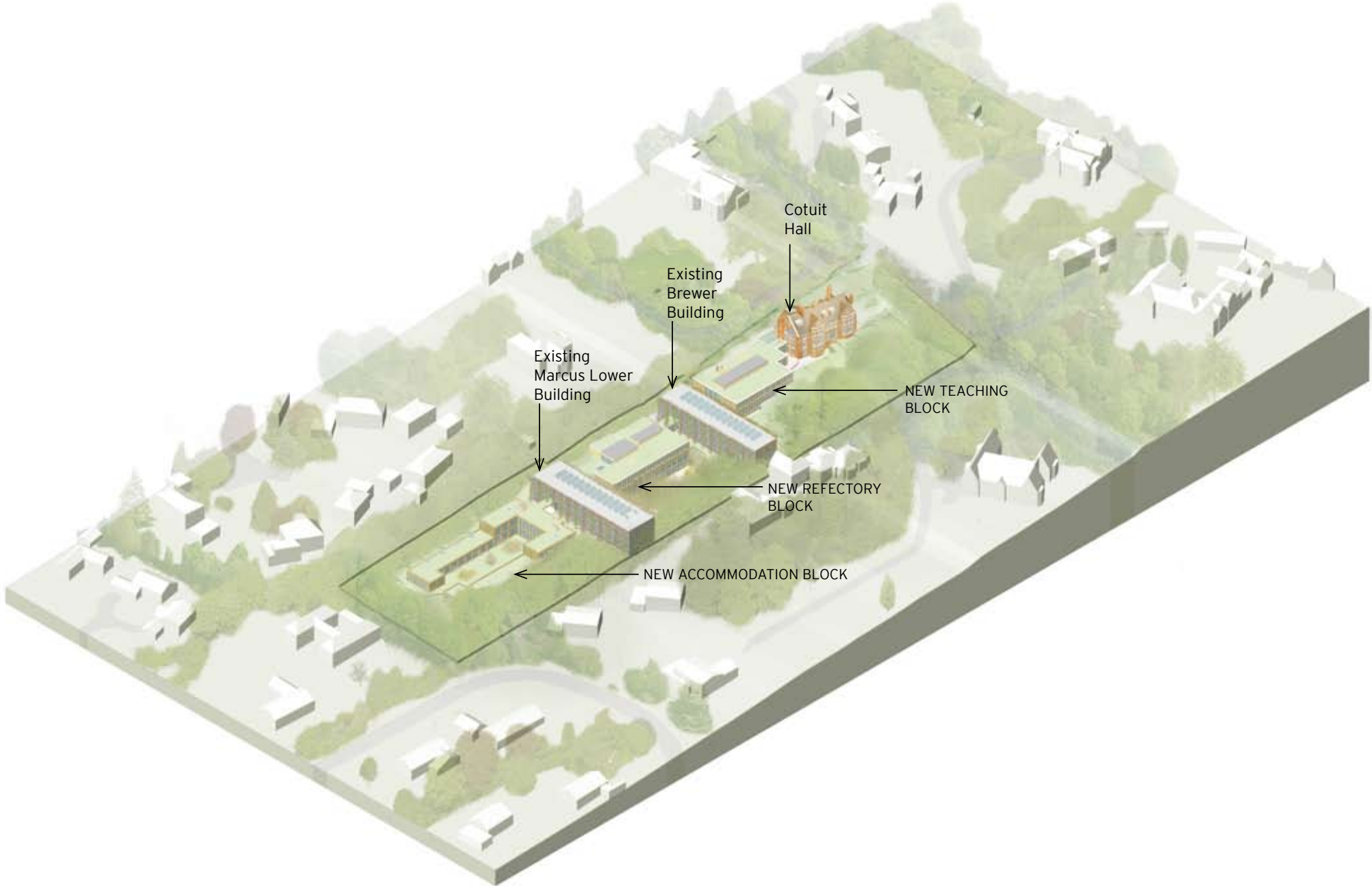
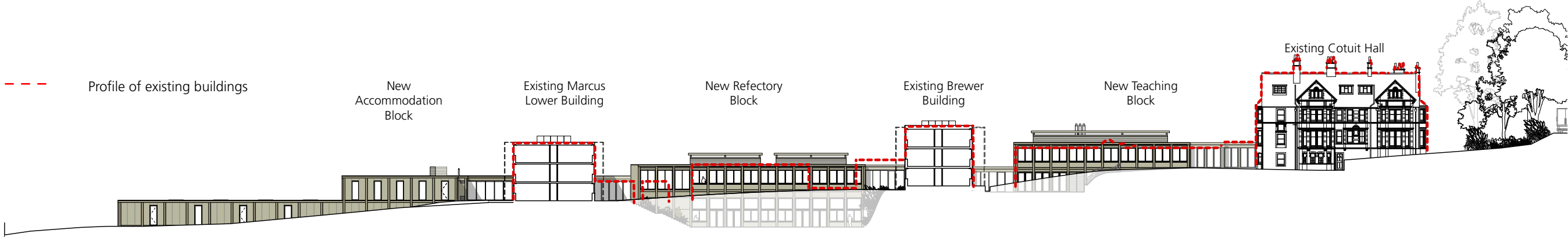


6. PROPOSALS – OVERVIEW

6.6 Axonometric Views and Elevations



The proposed buildings on the site



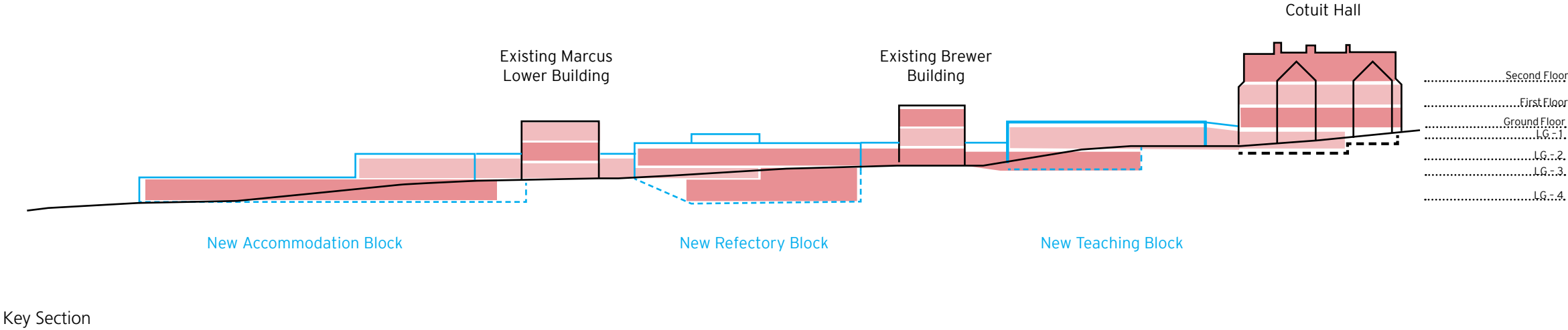
South Elevation - as proposed

7. PROPOSALS – PLANS

7.1 Introduction

The next few pages look at the layout of the scheme moving down the building storey by storey, to follow the slope of the site.

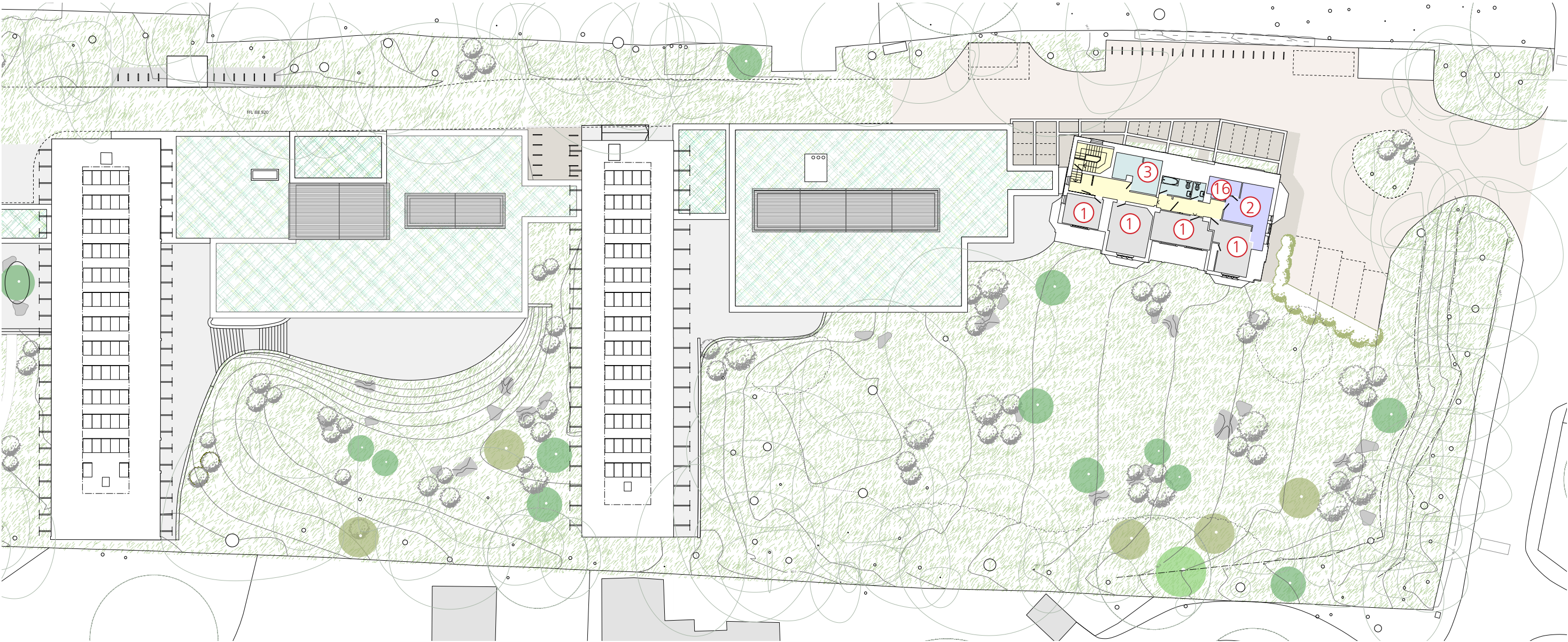
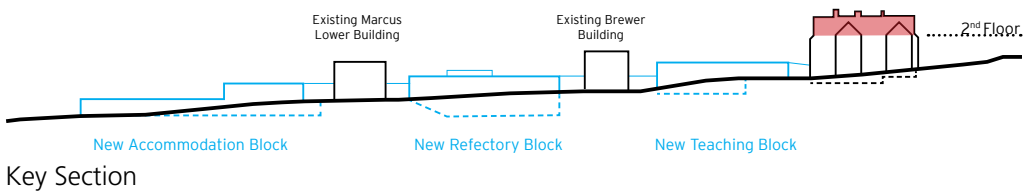
The plans are ordered to start at the top floor (second) of Cotuit Hall at the east end of the site and progress to the lowest level of the New Accommodation Block at the western end.





7. PROPOSALS – PLANS

7.2 Second Floor Plan



The top floor of Cotuit Hall is given over to residential accommodation.

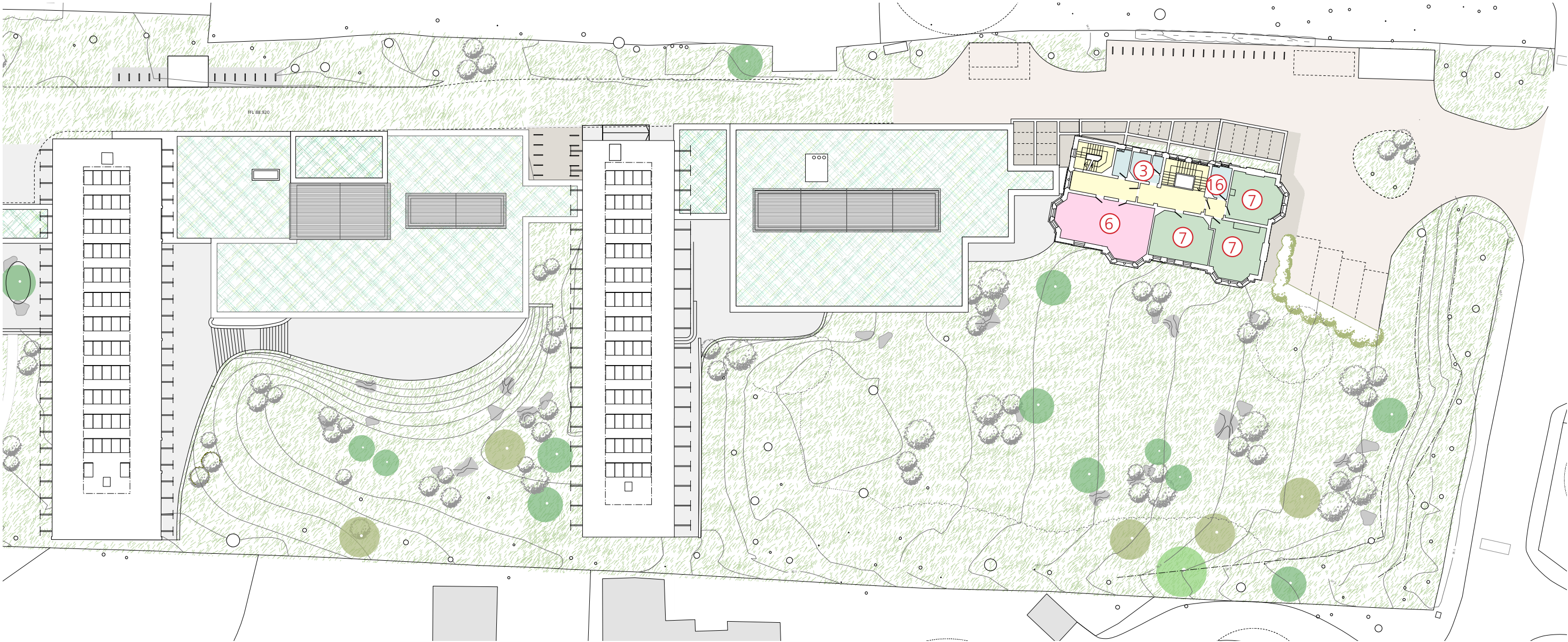
The existing external escape staircase is proposed to be removed to improve the visual appearance of the building on approach. This will require that the existing westerly internal staircase is utilised purely as an escape stair from the top floor of Cotuit Hall.

- |                  |                   |                       |                               |
|------------------|-------------------|-----------------------|-------------------------------|
| ① Bedrooms       | ⑥ Staff Room      | ⑪ Headmaster's Office | ⑯ Kitchen                     |
| ② House Parent   | ⑦ Classroom       | ⑫ Laboratory          | ⑰ Prayer Room                 |
| ③ WC's / Showers | ⑧ Pastoral Office | ⑬ Plant Room          | ⑱ Library                     |
| ④ Gym            | ⑨ Academic Office | ⑭ Refectory           | ⑲ Activities desk             |
| ⑤ Sick bay       | ⑩ School Office   | ⑮ Common Room         | ⑳ Reception / Guidance Office |



7. PROPOSALS – PLANS

7.3 First Floor Plan



Proposed First Floor Plan

The first floor level of Cotuit Hall provides teaching spaces and a staff workroom, with support spaces such as a 'teapoint' and WC's.

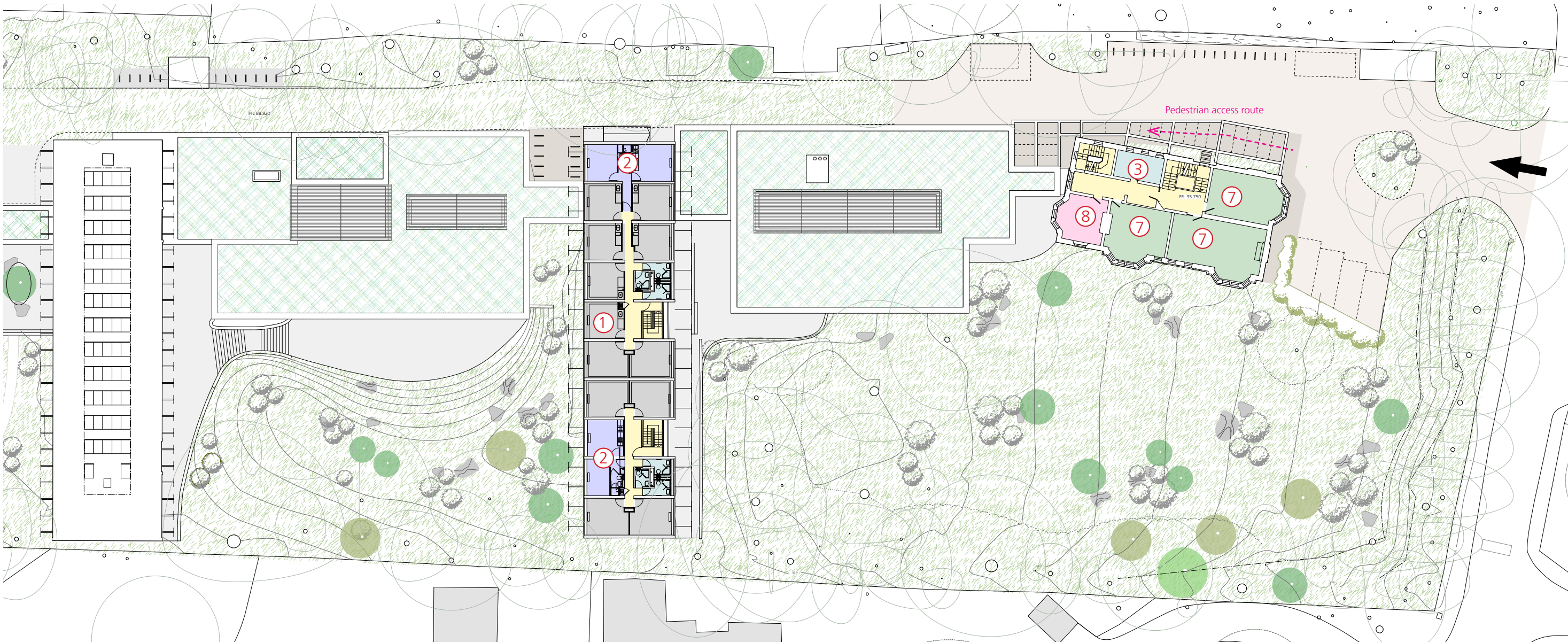
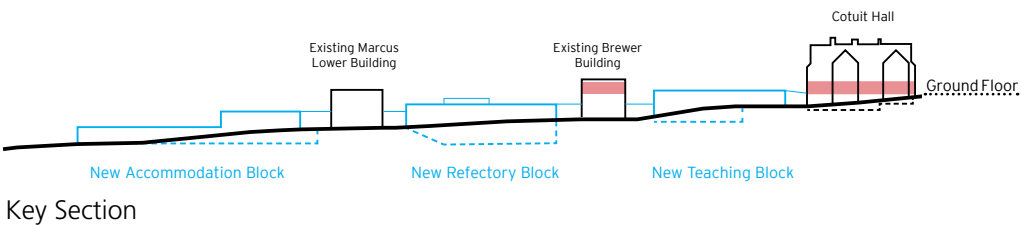
The original main staircase in the centre of the plan is returned as the primary means of circulation within Cotuit Hall.

- |                  |                   |                       |           |
|------------------|-------------------|-----------------------|-----------|
| ① Bedrooms       | ⑥ Staff Room      | ⑪ Headmaster's Office | ⑯ Kitchen |
| ② House Parent   | ⑦ Classroom       | ⑫ Laboratory          |           |
| ③ WC's / Showers | ⑧ Pastoral Office | ⑬ Plant Room          |           |
| ④ Gym            | ⑨ Academic Office | ⑭ Refectory           |           |
| ⑤ Sick bay       | ⑩ School Office   | ⑮ Common Room         |           |



7. PROPOSALS – PLANS

7.4 Ground Floor Plan



Proposed Ground Floor Plan

A new pedestrian route is provided on the north side of the existing Cotuit Hall building in place of the existing single storey entrance hall which is proposed to be removed. The Ground Floor of Cotuit House is no longer used as the primary entrance to the school, the existing ramped approach to the south facade is therefore demolished.

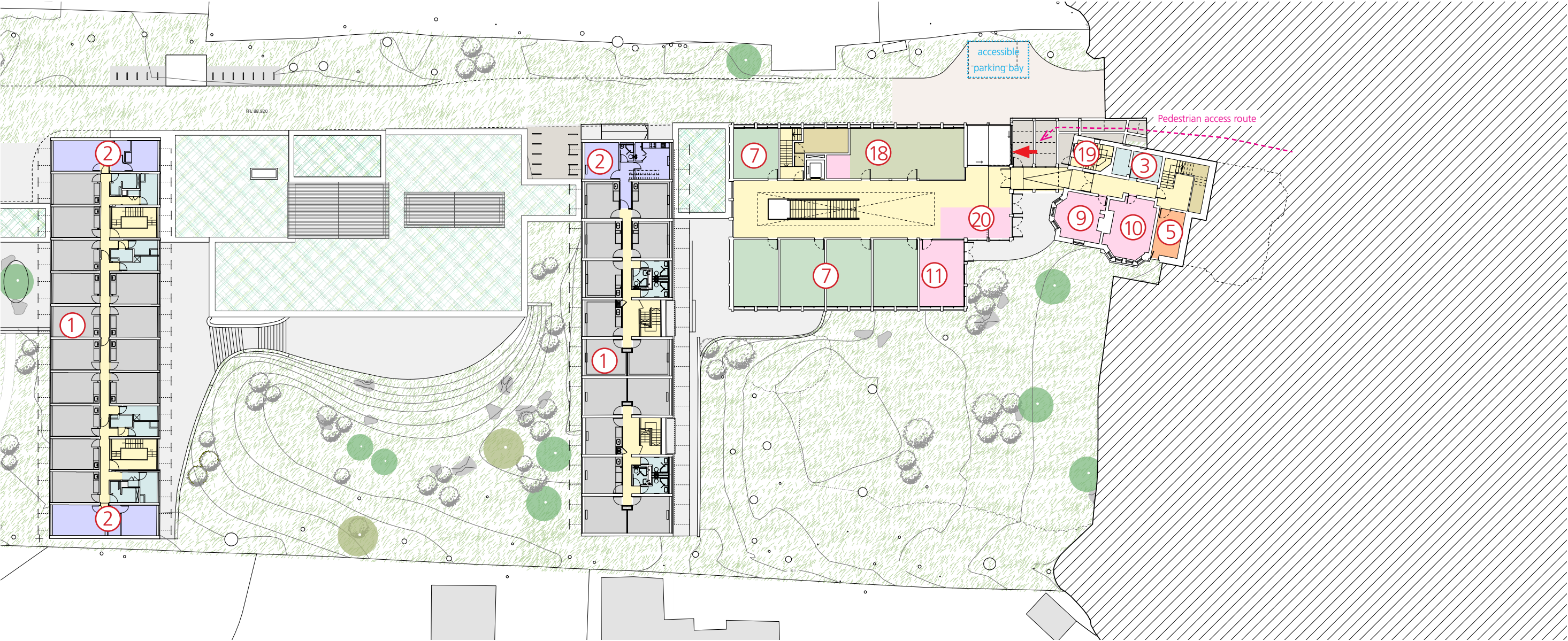
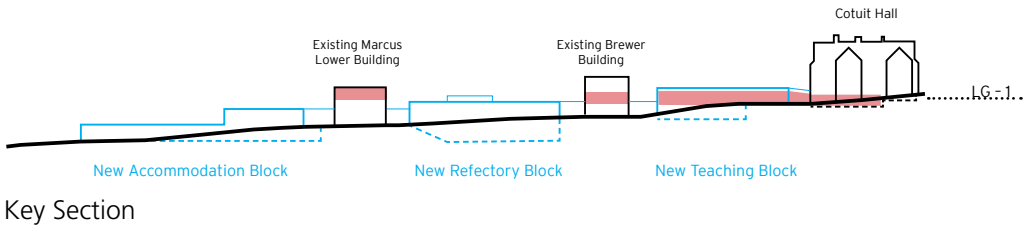
The new approach from the car park to the east and highest part of the site is gently stepped and covered with a glazed structure.

- |                  |                   |                       |                               |
|------------------|-------------------|-----------------------|-------------------------------|
| ① Bedrooms       | ⑥ Staff Room      | ⑪ Headmaster's Office | ⑯ Kitchen                     |
| ② House Parent   | ⑦ Classroom       | ⑫ Laboratory          | ⑰ Prayer Room                 |
| ③ WC's / Showers | ⑧ Pastoral Office | ⑬ Plant Room          | ⑱ Library                     |
| ④ Gym            | ⑨ Academic Office | ⑭ Refectory           | ⑲ Activities desk             |
| ⑤ Sick bay       | ⑩ School Office   | ⑮ Common Room         | ⑳ Reception / Guidance Office |



7. PROPOSALS – PLANS

7.5 Lower Ground Floor – 1 Plan : Entrance Level



Proposed Lower Ground Floor –1 Plan

This level contains the new main entrance with an accessible parking bay, provided directly opposite for level entry to the building. A generous new entrance hall and reception look over the lawn to the south. A wide, top-lit, central space connects classrooms and the Library to lower levels.

- |                  |                   |                       |                   |
|------------------|-------------------|-----------------------|-------------------|
| ① Bedrooms       | ⑥ Staff Room      | ⑪ Headmaster's Office | ⑯ Kitchen         |
| ② House Parent   | ⑦ Classroom       | ⑫ Laboratory          | ⑰ Prayer Room     |
| ③ WC's / Showers | ⑧ Pastoral Office | ⑬ Plant Room          | ⑱ Library         |
| ④ Gym            | ⑨ Academic Office | ⑭ Refectory           | ⑲ Activities desk |
| ⑤ Sick bay       | ⑩ School Office   | ⑮ Common Room         | ⑳ Reception       |